

# Making it as easy as “Copy and Paste”

## Enhance RTP Performance

EDG's RTP solution includes modernization of the splice control and the tension control system. By replacing obsolete components with leading edge technology, performance is enhanced providing tangible ROI including:

- **IMPROVED REGISTRATION**
- **INCREASED ROLLS PER BREAK**
- **REDUCED BUTT SIZE**
- **DIMINSHED WASTE**

### Out With the Old, In With the New

- RTP **enclosure and all internal components** replaced with the latest in technology
- Antiquated **predrive motor is replaced** with a standard AC motor
- **High performance AC drive** provides precise speed and tension for transition
- **Tension panel is stripped** of intricate components, other than load and dampening cylinder (can be optionally replaced), ridding complicated set-up
- An **E/P transducer and a floating roller position transducer are added** to the tension panels
- Same **E/P transducer replaces volume booster** in the pits
- **Surface sense and roll position sensor replaced** with identical laser devices

New Enclosure



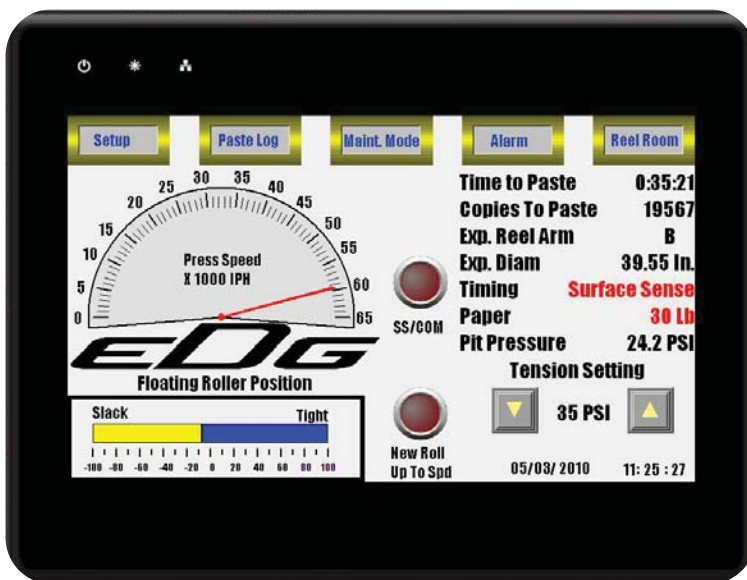
Reconfigured Tension Panel



## THE EDG SYSTEM EDGE:

- Fewer missed pastes and improved registration provide **Return On Investment**
- **Proven design** with unsurpassed **reliability** using state of the art equipment
- Elimination of proprietary, obsolete parts with **off-the-shelf components**
- Improved tension system provides **more consistent tension** under all conditions
- Independent brush and knife firing provides a means to **control tail length**
- Touch screen provides **equipment status and unrivalled diagnostics** reducing downtime of the reel
- User Interface provides **notification of component failure** or operational issues
- **Critical information for every paste** is logged in to a Paste Log which tells the “whole story”
- Extensive **troubleshooting capabilities** reduce downtime
- **Running off the core is eliminated** with extensive state monitoring and comprehensive error checking
- Inclusion of web break signal permits **footage count after knife firing** to break
- Reduced and **consistent butt size**
- 24/7 **Remote support via modem or internet** provides quick access to experts
- Fully supported product, with **complete drawings and training** provided

### RTP Overview Screen



### Paste Log Screen

